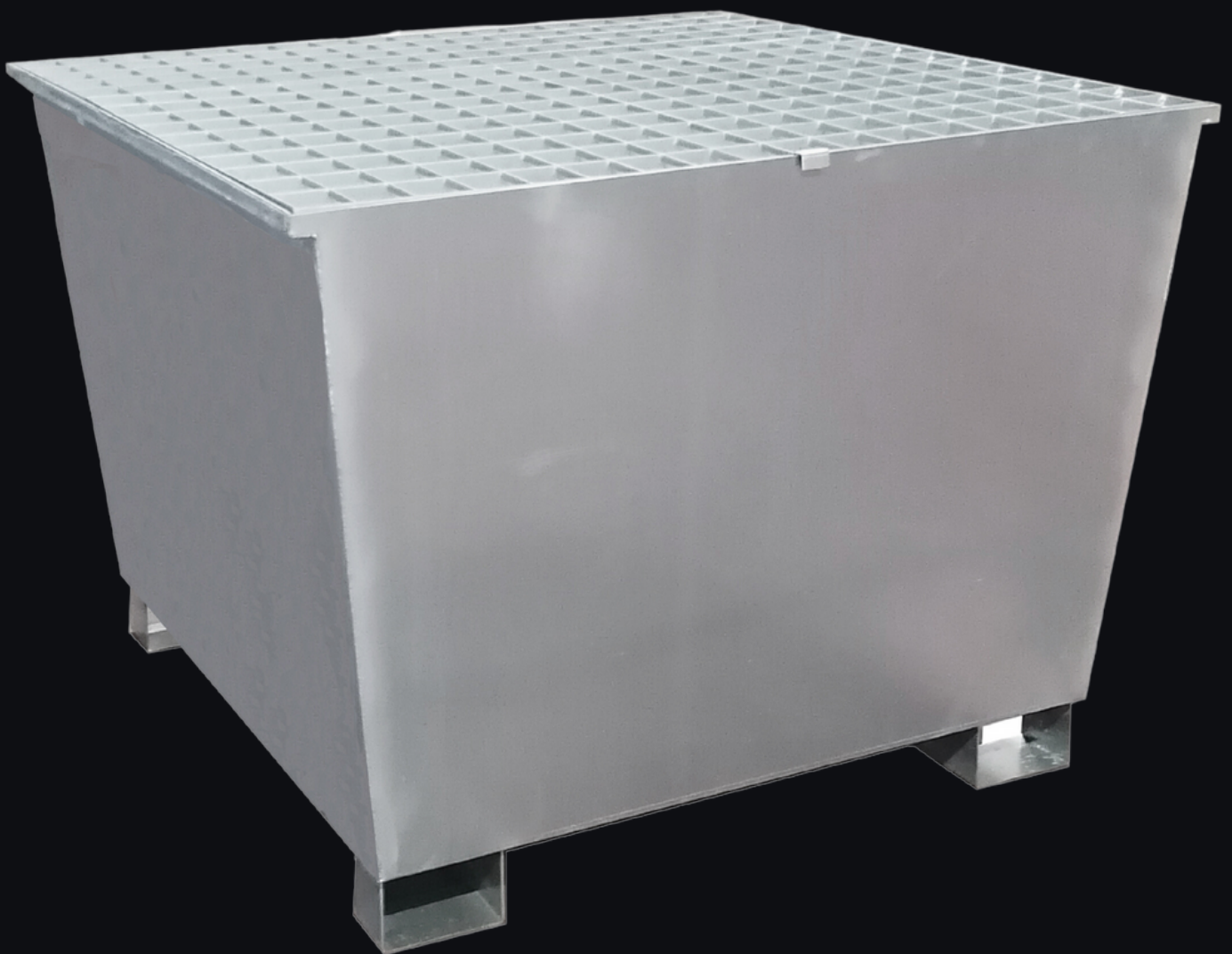


emtez

Galvanised steel pallet

Emtez



For safe spill containment

info@emtez.co.uk

www.emtez.co.uk

(+44) 0150 643 0309

Features

The spill pallet, conical in shape and made of cold-galvanised steel, is designed to accommodate 1 IBC.

The design is complemented by 4 U-shaped feet (h.100mm) and a removable hot-dip galvanised steel grate. The pallets can be stacked in a nesting manner to optimise transport costs.

Technical specifications

- DIMENSIONS: 1220 x 1220 x h.905mm (including feet)
- LOAD CAPACITY of the grate: 1000kg/m²
- TARE WEIGHT: 96 kg
- SUMP CAPACITY: 1000 L
- STORAGE BASIN HEIGHT: h.805mm
- SHAPE: Conical
- MATERIAL: Steel
- GALVANISATION: Cold-galvanised

Related products



Steel-covered spill pallet with a door

EXTERNAL SIZE: 1453 x 1312 x h. 2081 mm
INTERNAL SIZE: 1360 x 1270 x h. 1300 mm
STORAGE BASIN HEIGHT: h.600 mm
SUMP CAPACITY: 1000 L
TARE WEIGHT: 310 kg
UDL: 1000 kg/m²

Steel spill pallet with support platform and dispensing area

DIMENSIONS: 1380 x 1680 x h. 1050 mm
(feet included)
STORAGE BASIN HEIGHT: h.450 mm
SUMP CAPACITY: 1000 L
TARE WEIGHT: 236 kg
UDL: 1000 kg/m²

